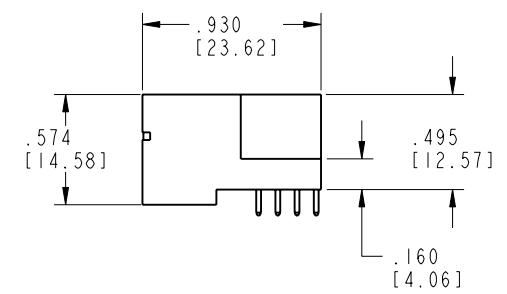
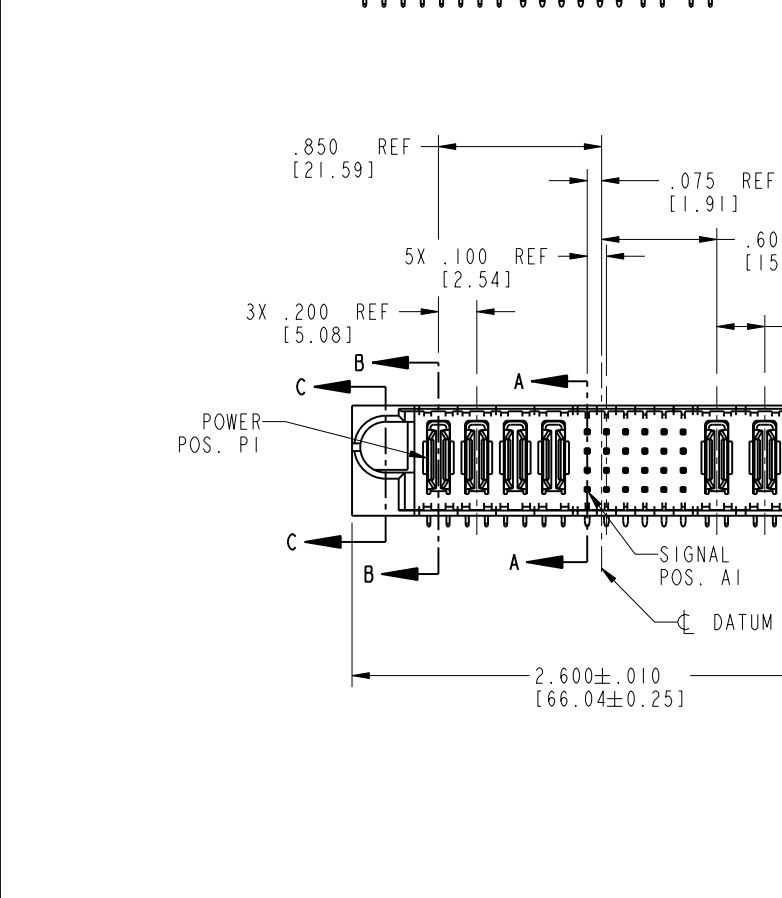
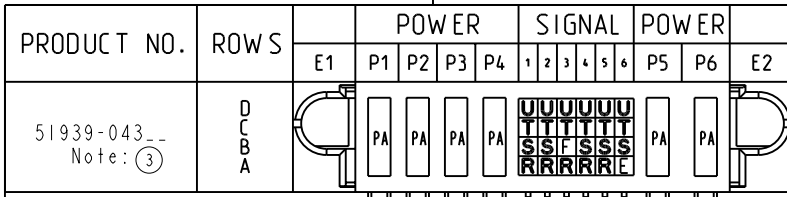


Tous droits strictement réservés. Reproduction ou communication o des liers interdite sous quelque forme que ce soit sans autorisation écrite du propriétaire. Propriété de c FCI. Droits de reproduction FCI.

All rights strictly reserved. Reproduction or issue to third parties in any form whenever is not permitted without written authority from the proprietor. Property of FCI. Copyright FCI.



CODE	DIM "M" MATING LENGTH	CONTACT TYPE
E	.220 [5.59]	SIGNAL
F	.220 [5.59]	SIGNAL
R	.270 [6.86]	SIGNAL
S	.270 [6.86]	SIGNAL
T	.270 [6.86]	SIGNAL
U	.270 [6.86]	SIGNAL
PA	N/A [N/A]	POWER

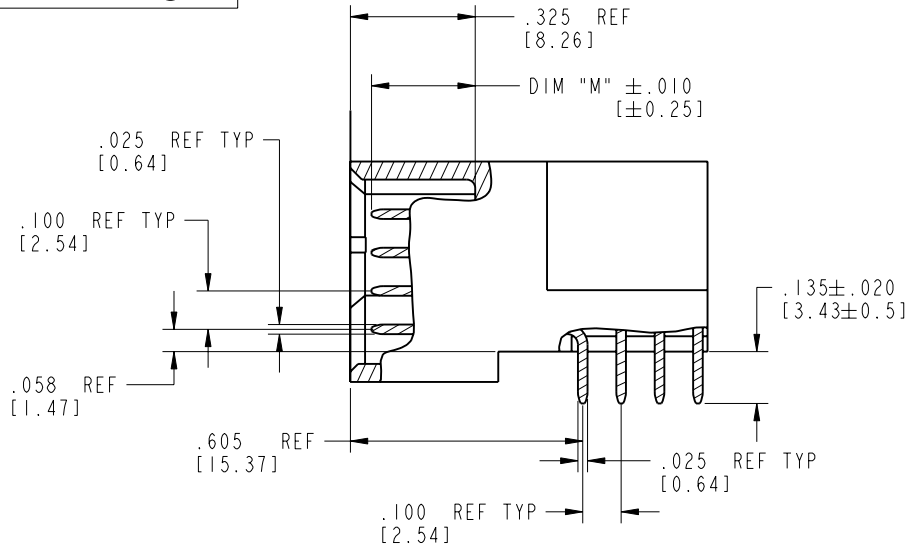
mat'l code				tolerances unless otherwise specified			CUSTOMER		
SEE NOTE 2							COPY		
ltr	ecn no.	dr	date	linear	.XX ± .01/0.X ± 0.3		projection		
A	V03-0142	TAB	01/13/03		.XXX ± .005/0.XX ± 0.13		INCH/MM		
B	DG05-0182	SJ	06/22/05	angles	.XXX ± .002/0.XXX ± 0.051		scale		
C	DG06-0008	JMG	01/07/06		0° ± 2°		1:1		
				dr	T. BRUNGARD	01/31/03	product family		
				enrg	M. MOSTOLLER	01/31/03	PwrBlade		
				chr	M. MOSTOLLER	01/31/03	code		
				appd	M. MOSTOLLER	01/31/03	213		
sheet index		revision sheet		C	C	C	C	product size	
1		2		3	4			dwg no	
								A 51939-043	
								sheet	
								1 of 4	

Tous droits strictement réservés. Reproduction ou communication o des liers interdite sous quelque forme que ce soit sans autorisation écrite du propriétaire. Propriété de c FCI. Droits de reproduction FCI.

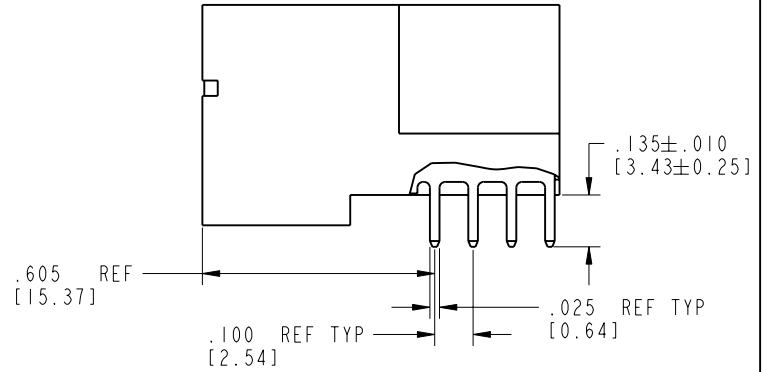
All rights strictly reserved. Reproduction or issue to third parties in any form, whatever is not permitted without written authority from the proprietor. Property of FCI. Copyright FCI.

PRODUCT NUMBER

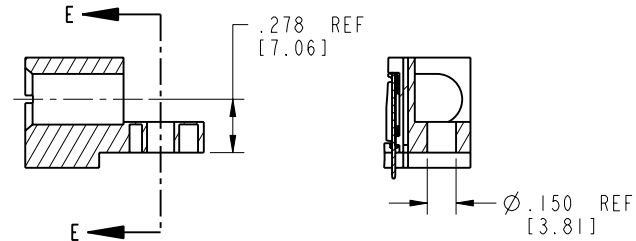
51939-043__
Note: (3)



BROKEN-OUT SECTION A-A
SCALE 2:1



BROKEN-OUT SECTION B-B
SCALE 2:1



SECTION C-C

mat'l code SEE NOTE 2				tolerances unless otherwise specified		CUSTOMER	FCI www.fciconnect.com	
lfr	ecn no.	dr	date	linear	.XX±.01/0.X±0.3	COPY	title	4P + 24S + 2P
C				linear	.XXX±.005/0.XX±0.13	projection	RIGHT ANGLE SOLDER HEADER	
				angles	.XXX±.0020/0.XXX±0.051		product family	PwrBlade
				dr	T. BRUNGARD 01/31/03	INCH/MM	size	dwg no
				enrg	M. MOSTOLLER 01/31/03	scale	A	51939-043
				chr	M. MOSTOLLER 01/31/03	1:1	code 213	
				appd	M. MOSTOLLER 01/31/03		sheet 2 of 4	
sheet index	revision sheet							

cage code 22526

Pro/E

PDM: Rev:C

STATUS: Released

Printed: Aug 14, 2007

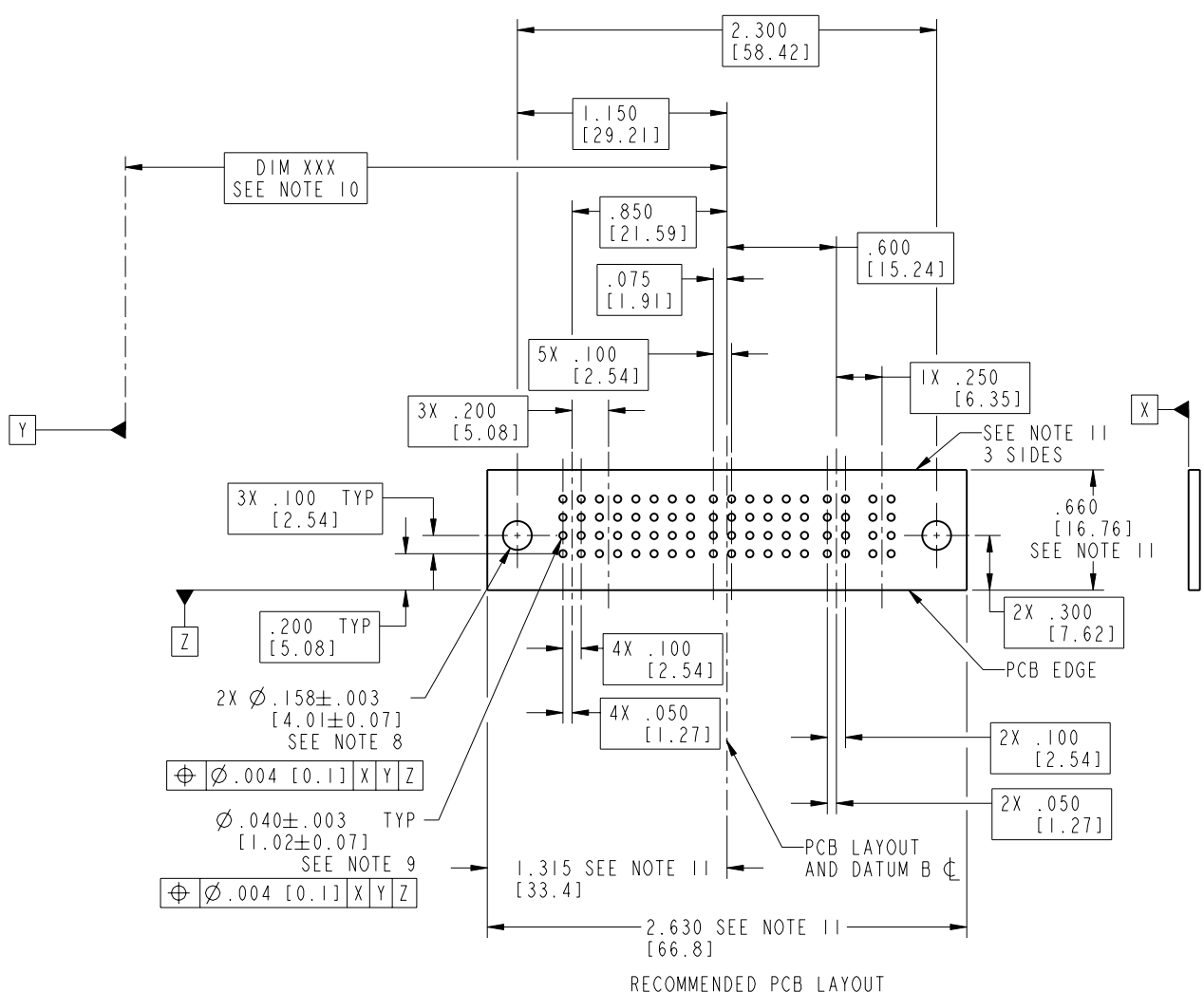
Tous droits strictement réservés. Reproduction ou communication o des liens interdite sous quelque forme que ce soit sans autorisation écrite du propriétaire. Propriété de c FCI. Droits de reproduction FCI.



All rights strictly reserved. Reproduction or issue to third parties in any form, whatever is not permitted without written authority from the proprietor. Property of FCI. Copyright FCI.

PRODUCT NUMBER

51939-043__
Note: (3)



RECOMMENDED PCB LAYOUT

mat'l code				SEE NOTE 2		tolerances unless otherwise specified		CUSTOMER		 www.fciconnect.com	
lfr	ecn no.	dr	date	linear	.XX±.01/0.XX±0.3	projection	COPY		title		
C				angles	.XXX±.005/0.XX±0.13				4P + 24S + 2P		
				dr	.XXX±.0020/0.XXX±0.051				RIGHT ANGLE SOLDER HEADER		
				enrg	T. BRUNGARD 01/31/03	INCH/MM			product family		code
				chr	M. MOSTOLLER 01/31/03	scale			PwrBlade		213
				appd	M. MOSTOLLER 01/31/03	1:1			size		sheet
sheet index		revision sheet						A		3 of 4	
								51939-043			

cage code 22526

Pro/E

PDM: Rev:C

STATUS: Released

Printed: Aug 14, 2007

Tous droits strictement reserves. Reproduction ou communication o des liers interdite sous quelque forme que ce soit sans autorisation ecrite du proprietaire. Propriete de c FCI. Droits de reproduction FCI.

All rights strictly reserved. Reproduction or issue to third parties in any form, whenever is not permitted without written authority from the proprietor. Property of FCI. Copyright FCI.



PRODUCT NUMBER

51939-043__
Note: ③

NOTES:

1. DIMENSIONS AND TOLERANCES ARE IN ACCORDANCE WITH ASME Y14.5M, 1994 UNLESS OTHERWISE SPECIFIED.

CONNECTOR NOTES:

- 2. HOUSING MATERIAL: UL 94 V-0 GLASS FILLED HIGH-TEMP THERMOPLASTIC
POWER CONTACT MATERIAL: COPPER ALLOY
SIGNAL PIN MATERIAL: COPPER ALLOY
- 3. 51939-043;51939-043LF;51939-043GLF PLATING SPEC. SEE PRINT:10064183
- 4. MANUFACTURER'S NAME, P/N, AND DATE CODE TO APPEAR ON THIS SURFACE.
- 5. PRODUCT SPECIFICATION GS-12-149.
APPLICATION SPECIFICATION BUS-20-067.
- 6. PACKAGED IN TRAYS.

PCB NOTES:

- 7. ALL HOLE DIAMETERS ARE FINISHED HOLE SIZE.
- 8. MOUNTING HOLES, WHERE APPLICABLE, ARE UNPLATED.
- 9. $\varnothing .0453 \pm .0010$ [1.151 \pm 0.025] DRILLED HOLES PLATED WITH .0003 [0.008] MIN SnPb OVER .001 [0.03] TO .003 [0.08] Cu PLATING TO ACHIEVE $\varnothing .040 \pm .003$ [1.02 \pm .07] HOLE.
- 10. "DIM XXX" TO BE DETERMINED BY THE CUSTOMER.
- 11. CONNECTOR KEEP-OUT ZONE.

mat'l code		SEE NOTE 2		tolerances unless otherwise specified		CUSTOMER		www.fciconnect.com	
lfr	ecn no.	dr	date	linear	.XX±.01/0.X±0.3	COPY			
C				projection	.XXX±.005/0.XX±0.13			title	4P + 24S + 2P
				angles	.XXX±.0020/0.XXX±0.051			RIGHT ANGLE SOLDER HEADER	
				dr	T. BRUNGARD 01/31/03	INCH/MM		product family	PwrBlade
				engr	M. MOSTOLLER 01/31/03	scale		code	213
				chr	M. MOSTOLLER 01/31/03	1:1		size	dwg no
				appd	M. MOSTOLLER 01/31/03			A	51939-043
sheet index	revision sheet							sheet	4 of 4

cage code 22526

Pro/E

PDM: Rev:C

STATUS: **Released**

Printed: Aug 14, 2007